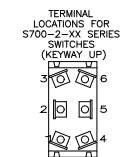
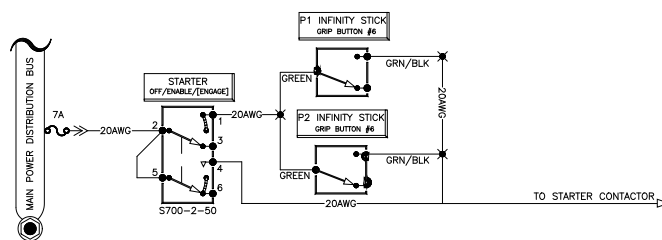


STARTER SYSTEM

BASED ON A SCHEMATIC PRODUCED BY RV-8 BUILDER, KEVIN HORTON,
WWW.KILOHOTEL.COM

DRAFT

DRAFT



Note 1: Wires with no size indicated are supplied with, and permanently attached to, relevant components

Note: Aircraft starter can be ENABLED by placing the toggle switch in the mid-position, and then ENGAGED by depressing either infinity stick grip button #6. Or by holding the toggle switch in the momentarily ENGAGE position. Returning the toggle to OFF disarms all starter switches.

REV H 12/04/06

Figure D-3. Starter System

www.rvproject.co.uk